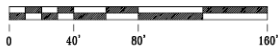


**1ST AMENDED  
WINDEMERE LAKESIDE  
GARDEN HOMES  
A CONDOMINIUM**

SITUATED IN NORTHWEST 1/4 OF THE SOUTHWEST 1/4 OF SECTION 26, TOWNSHIP 20 SOUTH, RANGE 2 WEST, CULLMAN COUNTY, ALABAMA

PREPARED BY:  
SURVEYING SOLUTIONS, INC.  
CARL DANIEL MOORE  
REG. I.S. NO. 12159  
2232 GAHABA VALLEY DRIVE, SUITE F  
BIRMINGHAM, ALABAMA 35242  
(205) 991-8965

OWNER:  
WINDEMERE LAKESIDE GARDEN HOMES, LLC



GRAPHIC SCALE: 1" = 40'

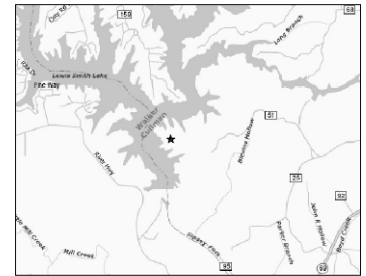
DATE: JANUARY 23, 2007  
1ST AMENDED DATE: APRIL 7, 2011

**Completed  
Home for Sale  
Unit 17**

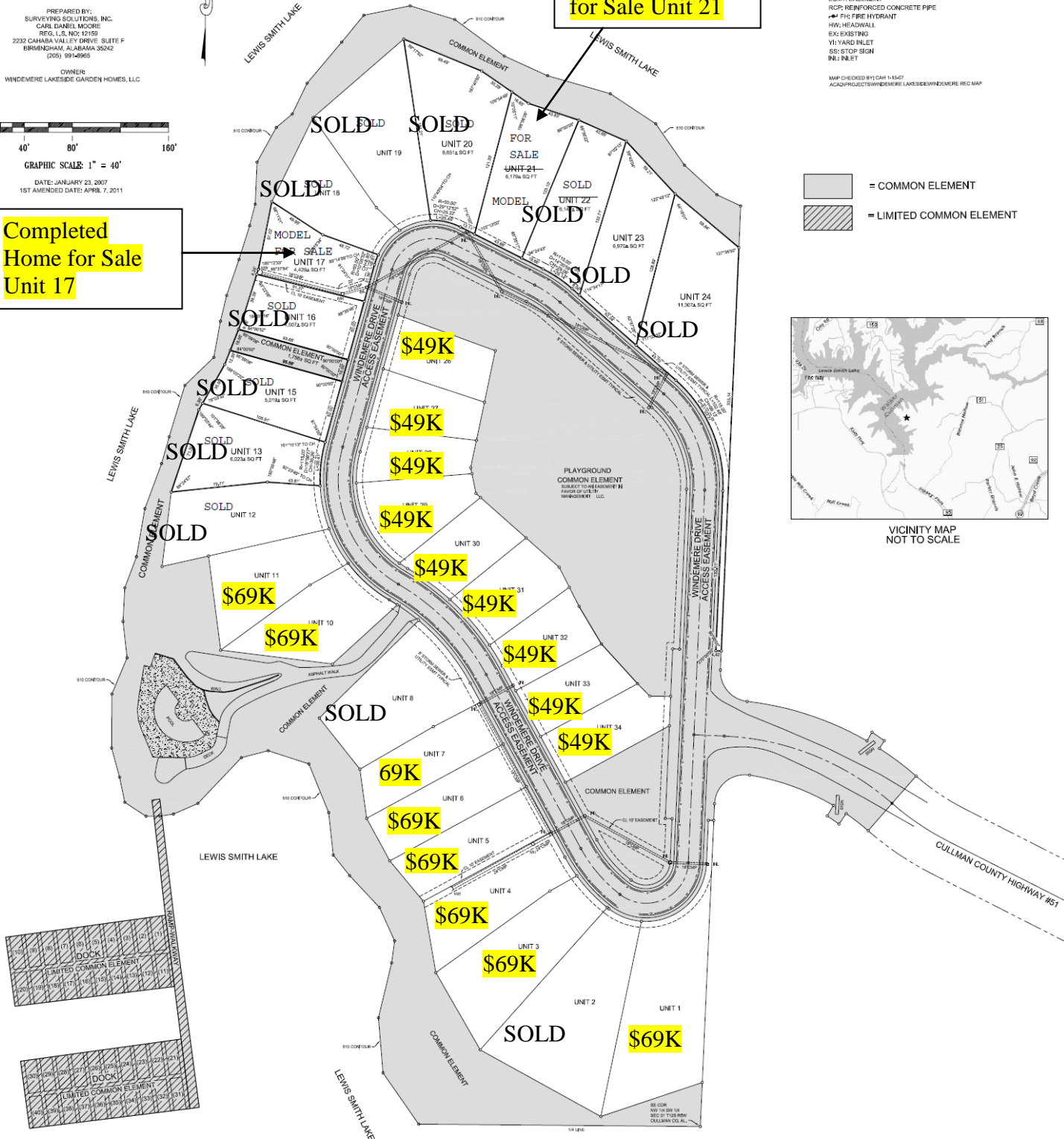
**Completed Home  
for Sale Unit 21**

- LEGEND**
- STORM SEWER
  - STORM SEWER MANHOLE
  - WATERLINE
  - UNDERGROUND POWER LINE
  - SG FT: SQUARE FEET
  - ±: 1 MILE OR LESS
  - D: DELTA ANGLE
  - ∠: DEFLECTION ANGLE
  - T: TANGENT
  - R: RADIUS
  - C: CHORD
  - ESMT: EASEMENT
  - RCF: REINFORCED CONCRETE PIPE
  - ±: 1 MILE OR LESS
  - HW: HEADWALL
  - EX: EXISTING
  - VI: YARD INLET
  - SS: STOP SIGN
  - IN: INLET

- [Solid Grey Box] = COMMON ELEMENT
- [Hatched Box] = LIMITED COMMON ELEMENT



VICINITY MAP  
NOT TO SCALE



**Windemere at Smith Lake – Waterfront and Lakeview home sites offered for the very first time with owner financing for qualified buyers. Lakefront lots from \$69k. Lakeview lots from \$49K.**