

W I N D E M E R E  
*at Smith Lake*





W I N D E M E R E  
*at Smith Lake*



A GREAT COMMUNITY  
*Exquisitely planned*

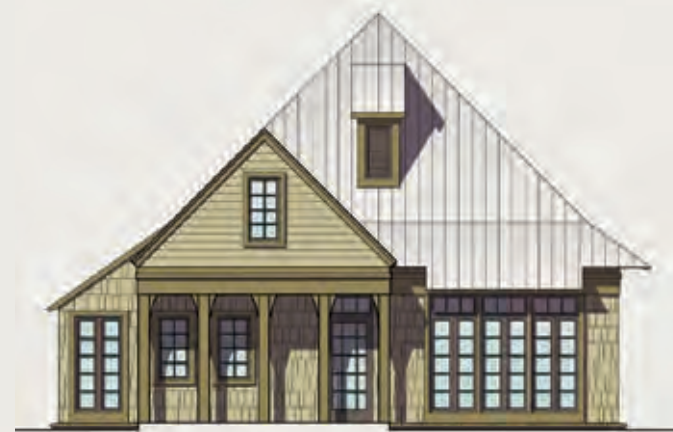
Windemere at Smith Lake is a single-family community of 32 carefully designed and crafted lake homes. At Windemere you will enjoy shared amenities like assigned slips in a covered community dock system, a swimming pool, waterside cabana and all the benefits of condominium ownership. Grounds and pier maintenance are handled by the Owner's Association so you can enjoy endless hours of fun with family and friends. It's the ideal lakefront lifestyle you have been dreaming about – right now at Windemere on Smith Lake.

- Custom kitchen with granite counters and upgraded appliance package
- Master suite on main level with custom crown molding
- Master bath luxuriously appointed with jetted tub and separate shower
- Greatroom with views - and access to magnificent decks
- Expansive terrace level with large bedrooms and ample storage
- Upgraded decor including comfortable blend of wood - tile and carpet flooring
- Each home available with a full digital package
- Custom upgrades available upon request



W I N D E M E R E  
at Smith Lake

SHEARWATER  
4 bedrooms / 3.5 baths



ENTRY ELEVATION



LAKESIDE ELEVATION



FIRST FLOOR



LOWER LEVEL

- Front porch
- Foyer with coat closet and stair hall
- Powder bathroom
- Great room with open living, dining, and kitchen with bar
- 2-story porch/terrace with exterior stair
- Master suite with walk-in closet, private toilet room, double sink vanity, whirlpool tub and separate shower
- Sitting room at lower level
- Large storage room with interior and exterior access
- 3 bedrooms and 2 bath at lower level
- Utility closet with washer and dryer
- 9' ceilings; Vaulted ceiling in great room

**SQUARE FOOTAGE:**

Heated/Cooled - 2,513 sf

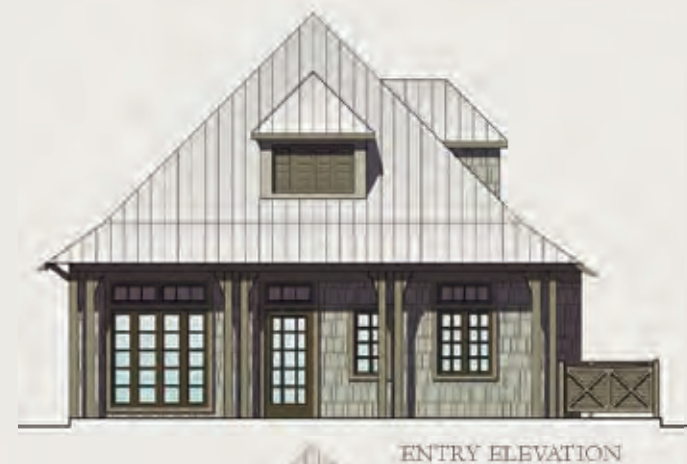
Covered Porches/Terraces - 177 sf

Decks/Open Patios - 125 sf

Exterior Stair (footprint)- 83 sf

W I N D E M E R E  
at Smith Lake

CAPE MAY  
4 bedrooms / 3.5 baths



ENTRY ELEVATION



LAKESIDE ELEVATION



FIRST FLOOR



LOWER LEVEL

- Front porch with wrap-around walkway connects to 2-story back porch/terrace with exterior stair
- Entry hall with stair and display nook
- Separate formal living/dining room
- Powder bathroom
- Master suite with walk-in closet, separate toilet room, double sink vanity, whirlpool tub and separate shower,
- Great room with open living and dining with fireplace
- Family room at lower level
- Laundry room with washer, dryer, and utility sink
- 3 bedrooms and 2 baths at lower level
- Exterior storage
- 9' ceilings; Vaulted ceiling at family room

**SQUARE FOOTAGE:**

Heated/Cooled - 2,426 sf

Covered Porches/Terraces - 716 sf

Decks/Open Patios - 320 sf

Exterior Stair (footprint)- 70 sf



W I N D E M E R E  
at Smith Lake

TURNSTONE  
4 bedrooms / 4 baths



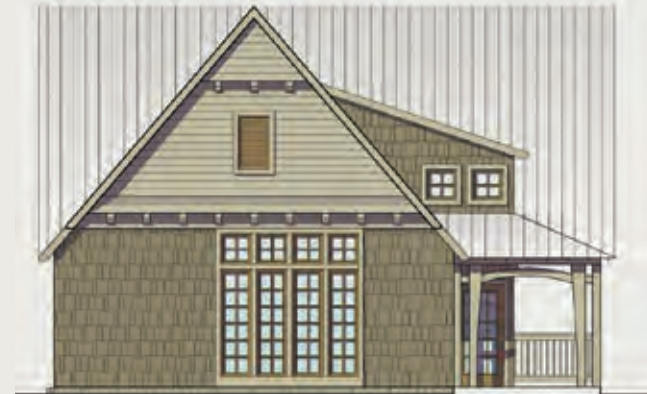
- Front porch
- Entry foyer with spiral stair
- Great room with open living, dining and kitchen with glass paneled cabinets above bar
- Guest bedroom on main floor
- Guest bathroom
- Coat closet
- 2-story back porch/terrace with exterior stair
- Master suite with dual closets, toilet with privacy partition, double sink vanity, whirlpool tub and separate shower
- Large family room with fireplace on lower level
- Large laundry room with washer, dryer, utility closet, and utility sink with countertop
- Owner's closet
- 2 bedrooms with private baths
- Interior storage space
- 9' ceilings; vaulted ceiling in great room

**SQUARE FOOTAGE:**

- Heated/Cooled - 2,407 sf
- Covered Porches/Terraces - 368 sf
- Decks/Open Patios - 45 sf
- Exterior Stair (footprint)- 85 sf

W I N D E M E R E  
at Smith Lake

SANDHILL  
3 bedrooms / 2.5 baths



ENTRY ELEVATION



LAKESIDE ELEVATION



FIRST FLOOR



LOWER LEVEL

- Wrap-around 2-story porch/terrace with exterior stair
- 2-story entry hall with clearstory windows
- Powder bathroom
- Great room with open living & dining
- Fireplace with sitting area
- Kitchen with glass paneled cabinets above bar and owner's storage/pantry
- Master suite with walk-in closet, separate toilet room, linen closet, double sink with vanity, and whirl-pool tub and separate shower
- Living space on lower level
- Utility closet with washer and dryer
- Linen closet and additional owners storage under stair
- 2 bedrooms with adjoining bath at lower level
- Storage room with interior access (exterior access may be available)
- 9' ceilings; vaulted ceiling in great room

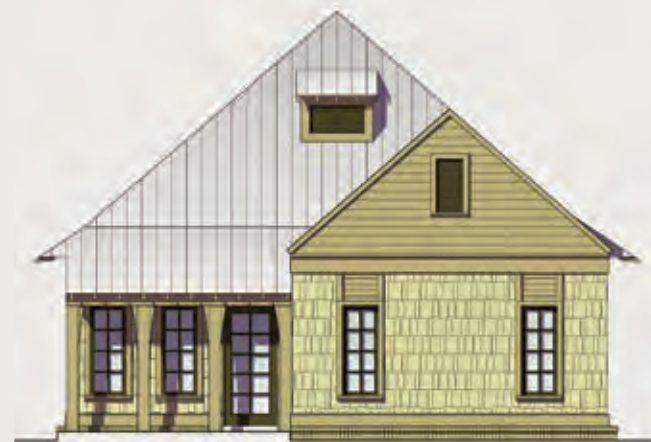
**SQUARE FOOTAGE:**

- Heated/Cooled - 2,411 sf
- Covered Porches/Terraces - 501 sf
- Decks/Open Patios - 11 sf
- Exterior Stair (footprint)- 59 sf



W I N D E M E R E  
at Smith Lake

WATERTHRUSH  
3 bedrooms / 3.5 baths



PARKSIDE ELEVATION



LAKESIDE ELEVATION



FIRST FLOOR

SECOND FLOOR

- Great room with open living and dining room
- Fireplace with sitting area
- Kitchen with glass paneled cabinets above bar
- Master suite with double sink vanity, whirl-pool tub and separate shower, his and hers closets, and separate toilet room
- Powder bathroom
- Utility closet with washer and dryer
- Owners storage under stair with exterior access
- Loft/living space on upper level with balcony that overlooks great room below
- 2 bedrooms upstairs with separate baths
- 9' ceilings

**SQUARE FOOTAGE:**

Heated/Cooled - 2,359 sf

Open to Below - 138 sf

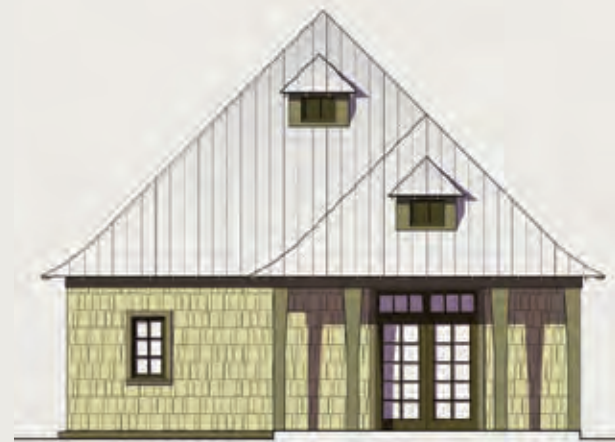
Covered Porches/Terraces - 79 sf

Decks/Patios - 42 sf

Storage - 32 sf

W I N D E M E R E  
at Smith Lake

SUMMER TANGER  
4 bedrooms / 3.5 baths



PARKSIDE ELEVATION



LAKESIDE ELEVATION



FIRST FLOOR



SECOND FLOOR

- Great room with open living and dining room
- Fireplace with sitting area
- Kitchen with glass paneled cabinets above bar
- Master suite with double sink vanity, whirl-pool tub and separate shower, his and hers closets, and separate toilet room
- Powder bathroom
- Utility closet with washer and dryer
- Owners storage under stair with exterior access
- Living space on upper level
- 3 bedrooms upstairs with adjoining baths
- 9' ceilings

**SQUARE FOOTAGE:**

Heated/Cooled - 2,484 sf

Storage - 50 sf

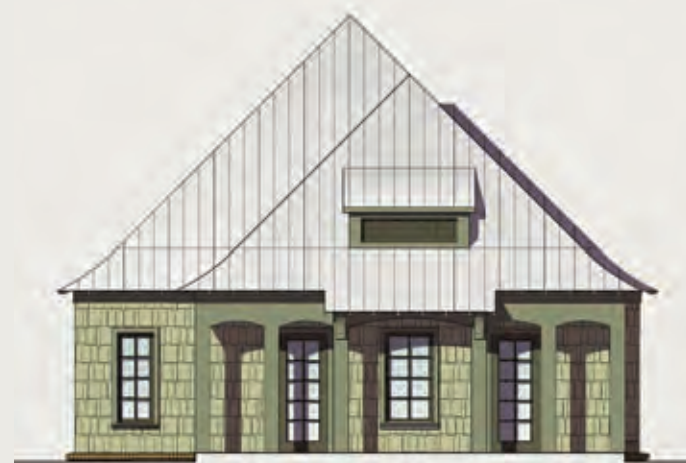
Covered Porches/Terraces - 158 sf

Decks/Open Patios - 82 sf



W I N D E M E R E  
at Smith Lake

FORSTER'S TERN  
4 bedrooms / 3.5 baths



PARKSIDE ELEVATION



LAKESIDE ELEVATION



FIRST FLOOR



SECOND FLOOR

- Great room with open living and dining room
- Fireplace with sitting area
- Master Bathroom suite with double sink vanity, whirl-pool tub and separate shower, his and hers closets, linen closet and separate toilet room
- Powder bathroom
- Coat closet
- Utility closet with washer and dryer
- Owners storage under stair with exterior access
- Balcony/catwalk on second floor overlooking great room
- 3 bedrooms upstairs with adjoining baths
- 9' ceilings

**SQUARE FOOTAGE:**

Heated/Cooled - 2,409 sf

Open to Below - 141 sf

Storage - 20 sf

Covered Porches/Terraces - 191 sf

Decks/Open Patios - 209 sf



W I N D E M E R E  
*at Smith Lake*

WindemereLakeside.com

Developed by  
CRANE HILL DEVELOPMENT, LLC